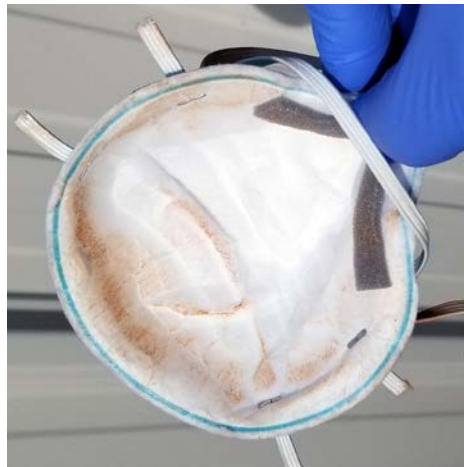


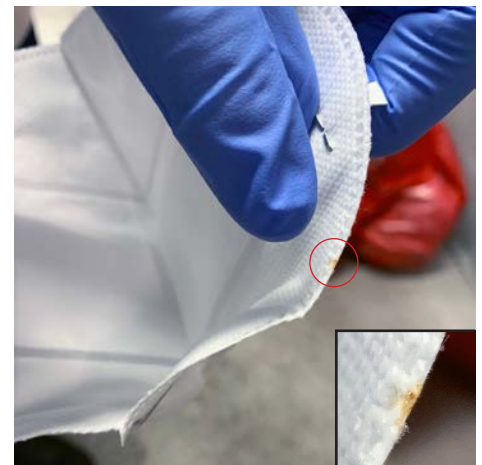
# BATTELLE CCDS™ MASK SOIL GUIDANCE

Each mask sent to Battelle CCDS™ for decontamination is inspected by technicians to determine if it can safely be decontaminated for reuse. CCDS technicians examine each mask to ensure it is compatible for decontamination, that it is not damaged (e.g., damaged straps, nose bridges, or nose foam), and that it does not have any visible soiling such as makeup, blood, mucus, or other foreign material. Damage or soiling will cause the mask to be discarded as required by Battelle's FDA Emergency Use Authorization (EUA).

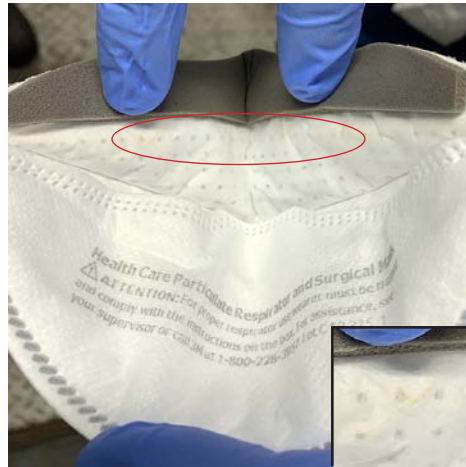
Please refer to this soil guide to help you maintain a high return rate for your masks. Our goal is to ensure your masks are effectively decontaminated. Any level of soiling, even a level that may seem minor, is a potential risk that we will not accept for safety and well-being of healthcare personnel and to comply with the terms of Battelle's EUA.



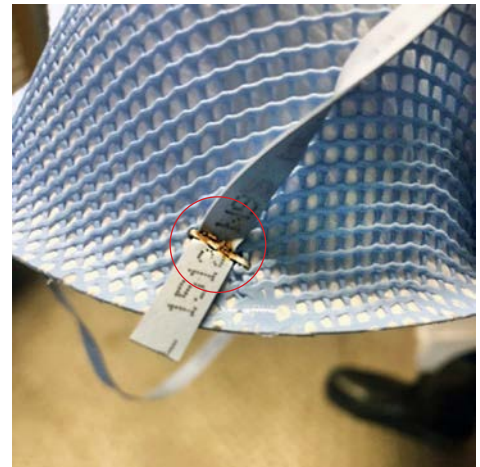
Makeup is the No.1 reason for masks to be discarded.



Small amounts of soiling will lead to masks being discarded.



Small amounts of soiling will lead to masks being discarded.



Damage will lead to masks being discarded.

Every day, the people of Battelle apply science and technology to solving what matters most. At major technology centers and national laboratories around the world, Battelle conducts research and development, designs and manufactures products, and delivers critical services for government and commercial customers. Headquartered in Columbus, Ohio since its founding in 1929, Battelle serves the national security, health and life sciences, and energy and environmental industries. For more information, visit [www.battelle.org](http://www.battelle.org).

Contact us at [ccdscustomerservice@battelle.org](mailto:ccdscustomerservice@battelle.org)

Battelle and its logos are registered trademarks of Battelle Memorial Institute. © Battelle Memorial Institute 2020. All Rights Reserved.

ID 747 06/20